

RAC/TRAC 2026: Aarhus

16th Roman Archaeology Conference / 34th Theoretical Roman Archaeology Conference

Venue: Aarhus University, Nordre Ringgade 1, 8000 Aarhus, Denmark.

Date: 21-23 May 2026 (with pre- and post-conference excursions on 20 and 24 May 2026)

Organizing Committee: Olympia Bobou, Ilaria Bucci, Fiona Haarer, Tatiana Ivleva, Frances McIntosh, Vinnie Nørskov, Rubina Raja, Tanja Romankiewicz, Sanja Vucetic, Anna Walas.

TRAC Local Committee: Milena Christensen, Rowan English, Julia Steding, Christina Videbech.

About of the City

Situated on the east coast of the Jutland peninsula, Aarhus is the second largest city of Denmark. It boasts a rich history dating back over a millennium, when it was founded by the Vikings in the 8th century at the mouth of the Aarhus River. Throughout the Middle Ages, Aarhus flourished as a prominent trading hub, attracting merchants from all over Europe. Its strategic position facilitated trade with neighbouring countries and contributed to its economic prosperity. The city's historic centre is dotted with well-preserved medieval buildings, including the iconic Cathedral of St Clemens, which dates back to the 12th century. In the 19th century, Aarhus underwent significant industrialisation, becoming a centre for manufacture and commerce. The expansion of the railway network further favoured its growth, connecting it to other major cities in Denmark and Europe. Today, Aarhus is renowned for its innovative urban design, cutting-edge architecture, and dynamic cultural scene. European Capital of Culture in 2017 and recently ranked at the top of the Happy City Index in 2024, Aarhus exudes an authentic Scandinavian vibe, seamlessly integrating the ancient and the modern.



Den Gamle By (The Old Town Museum). Photos O. Bobou

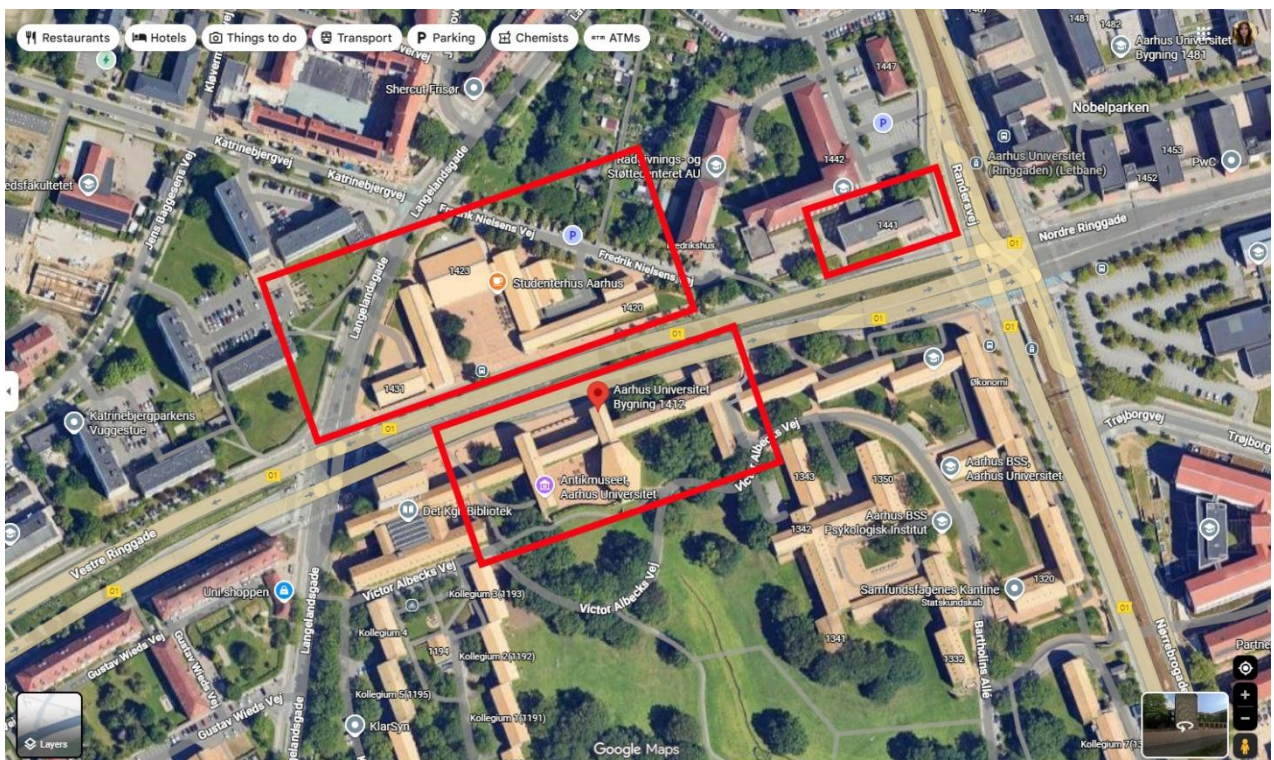


Aarhus Ø (Aarhus East). Photo I. Bucci

Conference venue

Founded in 1928, Aarhus university (38.000 students) is renowned for the excellence of its research output and the innovative teaching methods. The [university buildings](#) present a wide array of spacious venues (lecture halls, seminar rooms, auditoria).

The main conference venue will be located at the City Campus in the surroundings of [Nobelparken](#), including the buildings of the [Faculty of Arts](#), the [Conference Centre](#), Aula and Vandrehallen, and the [Museum of Ancient Art \(Antikmuseet\)](#). While these facilities are in close proximity, facilitating easy movement between conference sessions in various rooms and buildings, the participants are also encouraged to take breaks and unwind in the tranquillity of the university park extending up the hill.



Building units (organised by numbers) can also be located by downloading the **AU Find** app on your smartphone: <https://international.au.dk/about/contact-and-visitors-service/aufind> or on your browser: <https://www.au.dk/om/organisation/find-au/bygningskort>

Reception and session rooms

Nordre Ringgade 4, 8000 Aarhus C:

- Aulaen 1412-129B
- Vandrehallen 1410-119
- Stakladen, building 1422/111

Victor Albecks Vej 3, 8000 Aarhus C:

- Antikmuseet

Fredrik Nielsens Vej 2–4, 8000 Aarhus C:

- M1, building 1427/149
- Preben Hornung Stuen, building 1422/132
- Richard Mortensen Stuen, building 1422/122
- Mogens Zieler Stuen, building 1422/125
- M2, building 1427/246

Tåsingegade 3, 8000 Aarhus C:

- 1441-012 Tåsingegade 1
- 1441-113 Tåsingegade 3
- 1441-112 Tåsingegade 2

Additional rooms

For the conference, additional rooms in the same buildings will be available to support the attendees' needs. These will include quiet, meeting, and family rooms (including a dedicated breastfeeding room).

Accessibility

All the university buildings are fully accessible and equipped for wheelchair users and people with physical disabilities. All official homepages are fully accessible for visually impaired people. You can use the app AU Find for finding any university location.

Catering and evening events

Evening reception on Thursday 21 May

To conclude the first day of the conference, all participants are invited to a wine reception at the Campus (Vandrehallen) and the Museum of Ancient Art. This event will not only provide a valuable networking opportunity and prepare the attendees for the following days at the conference, but it will also give them the chance to visit the museum and explore its collections.

TRAC Party on Friday 22 May

The TRAC Party will take place at the premises of the Conference Centre on Friday 22 May from 20:00 onwards. Attendance is free, while a selection of alcoholic and non-alcoholic drinks will be available for purchase at the bar.

Catering

All coffee breaks and the wine reception on the first day of the conference (Thursday 21 May) are included in the registration fee.

Lunch arrangements can be made for attendees who sign up at <https://www.romansocietyrac.ac.uk/ractrac-2026/booking/>. The lunch option covers all three days at a price of £30 and includes a vegetarian wrap or sandwich, soft drinks, coffee, tea, milk, and plant-based milk. Vegan, gluten-free, and allergy-friendly options are available but must be booked in advance. If you wish to request one of these lunch options, please email us at ractrac2026@gmail.com with 'Dietary requirements' as email subject.

Excursions

Aarhus offers ample opportunities for exploration beyond the city limits. We propose two excursions, one on the day before the conference (Wednesday 20 May) and one on the day after (Sunday 24 May).

Advance booking and payment via the registration page is required to participate in these excursions: <https://www.romansocietyrac.ac.uk/ractrac-2026/booking/>

Moesgaard Museum (Wednesday 20 May) – half-day excursion

Situated just outside the city centre, amidst stunning natural landscape, the [Moesgaard Museum](#) showcases immersive exhibitions on archaeology, anthropology, and ethnography. Visitors can delve into reconstructed Iron Age houses, Viking treasures, and interactive displays that vividly animate history. Notable displays include the Illerup Ådal finds, an astonishing collection of military equipment from north-east of Skanderborg (about 20 km south-west from Aarhus) dating to the first centuries CE and counting hundreds of Roman weapons; and the so-called Grauballe Man, a well-preserved Iron Age bog body shedding light on ancient religious customs and practices.

We offer the opportunity of three guided tours to the permanent and temporary exhibitions:

1. The Illerup Ådal permanent exhibition (10:45–11:45): £20.
2. The temporary exhibition *The Celtic World – Europe's Lost Legacy* (11:15–12:15): £20.
3. The Iron Age permanent exhibition (11:45–12:45): £20.

All guided tours at the Moesgaard Museum will be led by museum curators and will take place simultaneously, with overlapping time slots around lunchtime. For this reason, each attendee may book only one tour. Each tour lasts approximately one hour and has a maximum capacity of 20 participants.

Please note that the price of guided tours does not include general admission to the museum. Participants booking a guided tour must also purchase a separate museum ticket (at the reduced rate of 160 DKK).

If you only want to visit the museum collections (both permanent and temporary exhibitions), tickets can be purchased online or at the museum shop at the standard price.

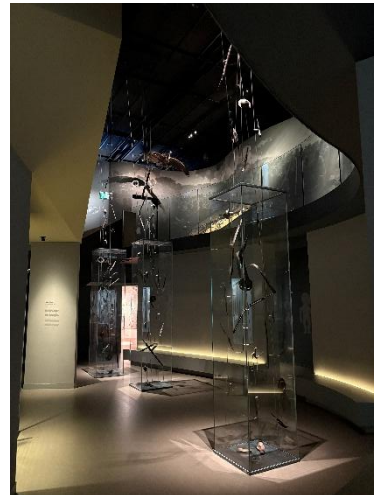
190 DKK (180 DKK online): Standard adult admission

110 DKK (100 DKK online): Standard student admission

Admission to the museum is free for students of Archaeology or Anthropology at Aarhus University and the University of Copenhagen, as well as Marine Archaeology students at SDU. Please bring a valid student ID and a photo ID.

For further information and online ticket purchase, please

visit: <https://www.moesgaardmuseum.dk/en/visit-us/tickets-and-annual-pass>



Moesgaard Museum: exterior (left, photo O. Bobou) and Illerup Ådal exhibition (right, photo R. S. English)

The tours may be combined with the lecture and reception later in the afternoon (15:30–18:00), which have a maximum capacity of 200 participants. This option will also have to be booked via the registration page (£15) and will include the lecture 'Rome in Iron Age Denmark: Discoveries and State of Research' by Xenia Pauli Jensen in the museum auditorium, followed by a reception featuring wine, soft drinks, and nibbles at the university campus located downhill from the museum.

Museum accessibility

The museum is situated on a hill, but access does not require climbing any stairs. From the bus stop, a fully paved sidewalk leads directly to the museum entrance. The parking area includes designated spaces for visitors with disabilities, and the museum entrance is located approximately 50 metres from these parking spots.

Please note that transport is not included in the excursion and will not be arranged by the conference. Participants will need to make their own way to the museum, either by taking [bus 18 Lystrup - Moesgaard Museum](#) from the city centre (approximately 30 minutes), by taxi, or private transport.

Wheelchairs and rollators

The museum is fully accessible, with lifts serving all exhibition areas (width 90 cm; depth 140–145 cm). Wheelchairs and rollators are available to borrow by contacting the ticket desk; however, these cannot be reserved in advance. Accessible toilets are available within all toilet facilities.

Prams

The museum is accessible with prams, and pushchairs are available to borrow on site.

We recommend contacting the museum in advance to ensure you have everything you need for the best possible experience.


More information and contacts at: <https://www.moesgaardmuseum.dk/en/visit-us/opening-hours-and-information>

Jelling (Sunday 24 May) – full-day excursion (8:00–17:00)

[Jelling](#) is a UNESCO World Heritage site known for its iconic runestones and burial mounds. Participants can immerse themselves in Viking history and culture while exploring the archaeological remains and the associated museum. This full-day excursion includes a guided tour of the Jelling site and museum (with an introductory presentation and a visit to the exhibition), a tour of the [Veje Museum](#), transportation by reserved bus from and back to Aarhus University, and lunch at a local country inn. Attendees may register for this excursion until it reaches full capacity (70 participants). The cost of the excursion is £90.



The mounds and rune stones at Jelling. Photos O. Bobou (left) and R. S. English (right)

 **To help you plan your visit:** Useful information on practical aspects can be found at: <https://conferences.au.dk/ces2022/your-stay-in-aarhus>; <https://www.visitaarhus.com/aarhus-region/plan-your-trip>

Getting to Aarhus

By plane

Aarhus is easily accessible from around the world via two nearby airports: Aarhus Airport and Billund Airport. Both offer direct and connecting flights to a wide range of European and international destinations.

Aarhus Airport, located 40 km north of the city centre, is the closest to the city. There is an airport shuttle bus (925X) from Aarhus airport with frequent departures – just outside the main entrance, usually 20 minutes after each flight arrival. The bus stops at the Aarhus University campus (Nobelparken), as well as in front of the main train station (Hovedbanegård or Aarhus H).

Billund Airport is located about 100 km south of Aarhus and generally offers a wider range of international connections than Aarhus Airport. There is an airport shuttle bus (912X) between Aarhus city and Billund airport with several daily departures from the central train station. The travel time from Billund Airport to downtown Aarhus is approximately 1 hour and 30 minutes.



By train

Aarhus lies at one of the most important railway junctions in Denmark. There are hourly departures to the north, south, and west. From Southern and Central Europe, the connections are via Hamburg/Flensburg. Travel time from Hamburg to Aarhus is approximately five hours. From Eastern European countries train connections to Aarhus go via Poland and Copenhagen.

Aarhus has hourly services to and from Copenhagen. The direct train journey typically takes around 3 hours, depending on the service. Aarhus Central Station is centrally located in the city, making it convenient for travellers to access accommodation and amenities upon arrival.

Further information about how to get to Aarhus at: <https://conferences.au.dk/getting-to-aarhus-and-aarhus-university>

Accommodation

There is no special arrangement between Aarhus University and local hotels, and all participants are required to make their own accommodation bookings. The organising committee does not provide a booking service, but please feel free to contact us if you have any questions.

Aarhus offers a range of accommodation options to suit every budget and preference. From luxury hotels to cozy B&Bs and stylish Airbnbs, visitors can choose from a variety of accommodations, including more than 400 places in the city centre and surrounding areas. Booking can be made by contacting the hotel/B&B directly or via online booking platforms such as [Booking](#) and [Airbnb](#). Low cost solutions are also available through [Danhostel Aarhus City](#), [CABINN Aarhus](#), and [Wakeup Aarhus](#).

Further information on accommodation in Aarhus: <https://conferences.au.dk/accommodation-in-aarhus>; <https://www.visitaarhus.com/areas-and-cities/aarhus/accommodation-aarhus/hotels>

Currency and Payments

In Aarhus and across Denmark, the official currency is the Danish krone (DKK). While cash is accepted in some places, we recommend using contactless or mobile payments (e.g., Apple Pay, Google Pay), as they are widely accepted and convenient. There is **no need to withdraw cash**, though currency exchange is available at banks, dedicated exchange offices, or the airport if needed.

Transportation in the city

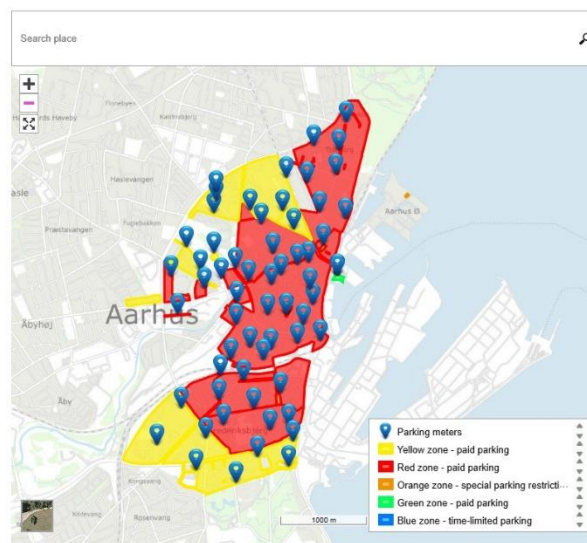
Once in Aarhus, getting around is easy and many attractions and museums are within walking distance. Mobility on the city is further favoured by an efficient public transportation system. An extensive network of buses and trams provides convenient access to university campus, conference venues, and key attractions. Visitors can purchase single tickets, or multi-ride passes from ticket machines or online by freely downloading the mobile app [Midttrafik](#).

Additionally, Aarhus is bike- and scooter-friendly, with designated bike lanes and rental services available for exploring the city at your own pace. You can rent bikes or scooters through apps such as [Donkey Republic](#) and [Voi](#).

Further information on getting around in Aarhus at: <https://conferences.au.dk/getting-around-in-aarhus>

Parking

Aarhus has several main parking areas, including large public parking garages and zones in the city centre, most of which are paid and operated by the municipality. Parking is typically regulated by time limits and fees, payable via parking meters or mobile apps (e.g. [EasyPark](#) or [ParkMan](#)). Close to Aarhus University, especially around Nobelparken, parking is available in designated university parking areas and nearby streets, all subject to local parking regulations. These areas are generally paid or time-restricted, and visitors are advised to check signage carefully, as enforcement is strict. You can find an overview of the parking zones (time-restricted and free) here: <https://aarhus.dk/kort-over-betalingsparkeringsomraaderne>



Attractions & amenities

One of the main draws to the city is [ARoS - Aarhus Art Museum](#), a standout attraction for its striking architecture and the extensive collection of modern and contemporary art and installations.



ARoS Museum. Photos I. Bucci

Even though ARoS and Moesgaard are the most renowned museum institutions, the city hosts an impressive array of museums, showcasing a diverse range of exhibits spanning art, history, and science (<https://www.visitaarhus.dk/explore/attraktioner-cid3/museer-cid13>).



View of the city centre and St Clements Cathedral (left); the Isbjerget (Iceberg residential complex), Aarhus Ø (right). Photos I. Bucci

Imbued with history, the Old Town Museum ([Den Gamle By](#)) captivates visitors with its cobblestone streets and picturesque architecture. Two smaller museums in the heart of the city, the Museum of Gender ([Køn Museum Denmark](#)) and the Occupation Museum ([Besættelsesmuseet](#)) provide thought-provoking experiences. A small Viking Museum ([Vikingsmuseet](#)) takes the visitors beneath today's streets to explore Viking-age pit houses, artefacts, and fortifications from around AD 980, when the town (then called Aros) was fortified under Kings Gorm and Harald Bluetooth. Cultural enthusiasts can engage with the vibrant arts community at [Godsbanen](#), a dynamic hub promoting innovation and creativity. For breathtaking views of the city, [Salling Rooftop](#) provides an ideal spot to savour coffee, drinks, or delicious meals.

Conference participants have a free voucher for ARoS and Gamle By. Godsbanen and Salling Rooftop are free to access.

The [Musikhuset](#) and [Kunsthall Aarhus](#) showcase the city's rich cultural tapestry through captivating performances and contemporary art exhibitions. Finally, for an unusual experience and a beautiful view of the harbour, visitors should not miss the opportunity to see the [Domen](#), a tree and glass structure home to an innovative cultural centre where sustainability is key.

Aarhus is surrounded by beautiful green spaces, offering plenty of opportunities for walking, cycling, and outdoor relaxation. The [Marselisborg Forests](#), stretching along the southern edge of the city, feature scenic woodland trails, historic landmarks, and views of the coast. [Riis Skov](#), one of Denmark's oldest public forests, lies to the north and provides peaceful paths, picnic areas, and beaches along the nearby coastline, making it easy to enjoy the outdoors just minutes from the heart of Aarhus.

More information on the city's attractions at: <https://www.visitaarhus.com/aarhus-region>



Views of and from the Riis Skov forest. Photos I. Bucci

Food

Aarhus has a vibrant food scene, and that includes the university campus. There are several canteens located close to the conference centre and the other buildings where the sessions are held. The Royal Library's canteen (Victor Albecks Vej 1, Building 1360), Nobel's Café and Deli (Jens Chr. Skous Vej 2, Building 1481), Mathematics Canteen (Ny Munkegade 118, Building 1530), offer a variety of hot and cold plates, sandwiches, and drinks (only on weekdays).

Other options are to be found at the Trøjborg Centret (Otte Ruds Gade 98, 8200 Aarhus) a shopping mall fifteen minutes away from the conference centre, where there is a large supermarket, Løvbjerg, with a great selection of sandwiches, salads, and warm dishes, as well as a few small food stalls and restaurants.

The city offers numerous cafés and restaurants in addition to three vibrant food markets: Aarhus Street Food (Ny Banegaardsgade 46), Banken Food Hall (Kannikegade 4, Sct. Clemens Bro), and Nikolinehus (Nicoline Kochs Plads 4).

For more information about opening hours, menus, and restaurants (in Danish):

Royal Library canteen/ Det Kgl. Bibliotek canteen: <https://www.kb.dk/en/visit-us/victor-albecks-vej-aarhus/food-and-beverages>

Nobel's Café and Deli: <https://shop.foodandco.dk/672510/weeklymenulist-da>

Matematisk Kantine: <https://www.matkant.dk/menu/dag/>

Trøjborg Centret: <https://trojborgcentret.dk/>

See also (in English): <https://www.visitaarhus.com/aarhus/eat-and-drink>

Pharmacies

There are several pharmacies in Aarhus. The closest ones to the University are: Stjerneapoteket (Stjernepladsen, Funch Thomsens Gade 3) and Trøjborgapoteket (Tordenskjoldsgade 30). Both close at 17:30. In the city centre, the most central are: the

Aarhus Railway Pharmacy (Banegårdspladsen 8, 8000 Aarhus), that closes at 17:30, and the Aarhus Løve Apotek (Store Torv 5, 8000 Aarhus) that closes at midnight.

Off-the-counter painkillers, as well as plasters, can also be bought at the supermarkets.

Emergency numbers

Emergency Services

112 – Police, ambulance, and fire (life-threatening emergencies): call this number in any situation requiring urgent help (accidents, serious injury, fire, crime in progress, etc.).

Police (non-emergency)

114 / +45 114 – Police non-emergency service (for reporting a crime or other police enquiries that are not urgent).

Medical Support

+45 70 11 31 31 – Emergency doctor service / after-hours medical help (useful outside GP hours or before visiting an emergency ward).

The Emergency Department is located at the Aarhus University Hospital (Palle Juul-Jensens Blvd. 161, 8200 Aarhus). For non-urgent emergencies, you must call Medical Support first, and when they approve of your request, you can go to the Emergency Department (either by using a taxi or the bus). For urgent medical emergencies, call 112.

These numbers work throughout Denmark and are free to call from any mobile or landline.